

# ScanMaker 9800XL Plus

Professional Graphic A3 Scanner

Tri-wave-length LED light source without warm-up time



CCD

1600  
DPI

48 bit  
color

3.7  
Dmax

LAN  
Support

Scan  
to  
CMYK

Warm  
up  
Free

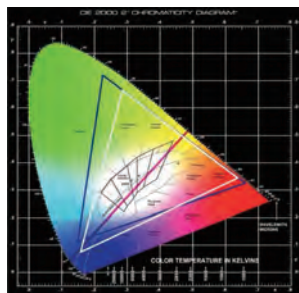
12" x 16"  
TMA  
(optional)

A3  
Reflective

PC, MAC  
Support

## LED light source has wider NTSC range to provide better image performance

Tri-wave-led, the white line in the picture, has the wider NTSC range. The blue line is full range of NTSC. Red line is dual-wave-length LED can scan.



## One powerful function button

Simply press one button, users can easily predefine one of the functions in ScanWizard Pro, which enhances efficiency and strengthens effectiveness.

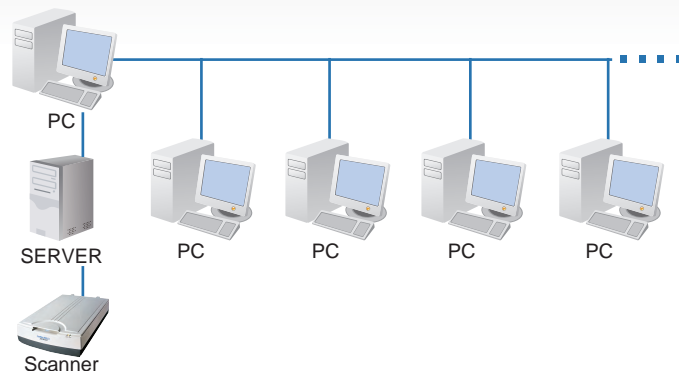


## Low noise design guarantees high quality

With low noise design, which used multi-sampling function, can guarantee the perfect and excellent image quality and lower noise.

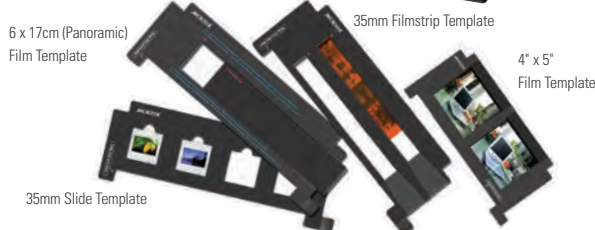
## Support LAN Connection through Intranet

After users activate Microtek Scanner Server, users can control scanners on different computers under LAN.



## Optional Transparency Media Adapter Support

A3 Size TMA supports more productive templates which allows users to scan various material with templates easily. With diversity templates, users can scan versatile films encompass 35mm, 6 x 9 cm, 4" x 5", and maximum up to 12" x 16"



### Specifications

Originals Supported  
Reflective and transparent originals from 35 mm up to  
- Reflective: 12" x 17"  
- Transparency: 12" x 16"

Sensor Type  
Tri-linear RGB CCD

Interface  
Interface: USB 2.0

Bit Depth  
Color: 48-bit  
Grayscale: 16-bit, Line Art: 1-bit

Sample Depth  
16-bit per color/ 48-bit true color

Dynamic Range  
3.7Dmax

Scanning Speed  
• 5.75 msec/ line full color  
• Preview: 7.1 sec (whole area)

Resolution  
• Optical: 3200 x 1600 dpi  
• Interpolated: 12800 x 12800 dpi

Environment  
• Temperature: 50-104° F (10 - 40° C)  
• Humidity: 20% to 85% RH

Dimensions (L x W x H)  
27.4" x 14.8" x 5.1"  
(627.38 mm x 375.92 mm x 129.54 mm)

Weight  
Net: 26.4 lbs (12 Kg)

### System Requirements

- CD-ROM drive (for installing software)
- Color display with 24-bit color output capability
- 512 MB RAM or more recommended

PC and compatibles  
• Pentium IV or higher with USB  
• Microsoft Windows XP, Vista or 7

Macintosh  
• Mac OS X 10.4 or later

### Included Software

- ScanWizard Pro
- InterVideo MediaOne Gallery
- ABBYY FineReader Sprint OCR
- Adobe Acrobat Reader
- Adobe Photoshop Element

*For more information about this product, please contact your local Microtek sales or dealers.*



© 2011 Microtek. Microtek, ScanMaker, ArtixScan and ScanWizard are trademarks or registered trademarks of Microtek International, Inc. All other brands, product names and logos herein are trademarks or registered trademarks of their respective holders. Specifications, software bundles and accessories are subject to change without notice. Delivery of technical support services subject to change without notice. Not responsible for typographical errors. © 2011 Ingram Publishing. 022511

## MICROTEK INTERNATIONAL, INC.

No. 6 Industry East Road 3, Science-Based Industrial Park, Hsinchu 300, Taiwan  
Tel: 886-3-577-2155 Fax: 886-3-577-2598 <http://www.microtek.com>



## Neon Function for Negative Film



Before



After

ScanWizard Pro has the ISO profile of each film brand. Users can base on the information of film manufactory, model, ISO, and so on to set the function and get the near-origin and genuine scanned image.

## Noise Reducing Function



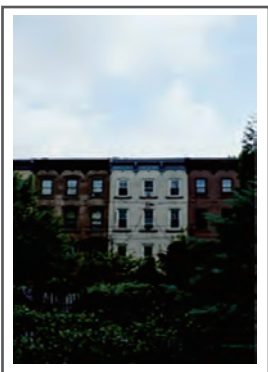
Before



After

Using Multiple Sampling can clarify the textures and reduce noise on the image so that the scanned images can get pristine and near-origin quality, which usually used by printing manufactory.

## Auto Dynamic Range



Before



After

An attempt to get the perfect scanned image, ScanWizard Pro can optimize the scanned transparency by comparing Dynamic Minimum and Dynamic Maximum.

## Brightness and Contrast



Before



After

By adjusting the brightness and contrast of scanned object, the scanned object can be more sharpen and clearer.

## Auto White Black Dot Correction



Before



After

Corrected by Auto White Black Dot Correction, scanned transparency or picture can be more adorable by brightening the white color and darkening the black color.

## Tone Curve



Before

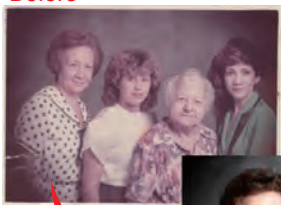


After

With the Tone Curve to control and calculate the saturation and Gamma of color of the pictures, the scanned image can be more delicate and accurate.

## Auto Color Restoration

Before

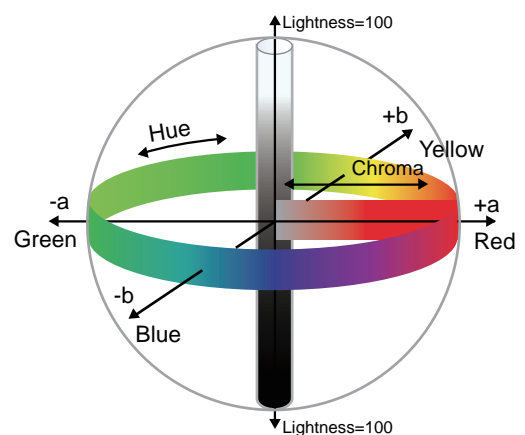


After



ColorRescue function can restore the faded color on the old pictures or films. Users can archive the old or discolored pictures anytime.

## Scan to CMYK, LCH and RGB color



In ScanWizard Pro with full palette features for device-independent (LCH) and device-dependent (CMYK, RGB) are for amateur and professional users to operate ScanMaker 9800XL Plus quickly.